

# Elective Grants Program for Medical Students

**6 Grants of \$3,500**

\$2,000 for you + \$1,500 for the community



*Together we can make a difference!*

*Together we can make a difference!*

***“As long as poverty, injustice and gross inequality persist in our world, none of us can truly rest.”***

Nelson Mandela

Life is full of choices, and your decision to help a developing community in need is a momentous one. It has wide reaching effects, particularly for the individuals and communities who will welcome your skills and assistance with open arms.

For you, an elective placement offers a mix of experiences and emotions, challenging not only your medical skills but also your views of the world.

At MIGA we share your commitment to developing communities and encourage you to apply for our Elective Grants Program to truly maximise the benefit of your placement.



For more information  
and to apply visit  
[www.miga.com.au](http://www.miga.com.au)

## The MIGA Elective Grants Program

MIGA's annual Elective Grants Program provides financial assistance to medical students undertaking their university elective in developing communities. Since the Program's launch in 2004, we have supported over 70 medical students who have participated in electives all around the world.

**Through the provision of funding, MIGA aims to:**

- Bring medical skills to communities in desperate need
- Provide medical or other aid to the community in a key area as identified by you, and
- Enrich your learning experience through exposure to new cultures and the delivery of health care in a different setting.

We are proud to offer the Elective Grants Program and are excited by the potential it has to assist communities around the world in need of help.

### Supporting Medical Students in Developing Communities

For the purpose of the Program, we define 'Developing Communities' as those that are poor and marginalised, where people struggle to:

- Control their own development
- Achieve equitable treatment, and
- Maintain an environment that is healthy and sustainable.

Whilst there are many countries overseas that meet these criteria, there are also Indigenous communities within Australia and its territories that are considered 'developing'. We encourage applications from students undertaking electives in developing communities both in Australia and overseas.

"I've now realised it's not always just about trying to save someone's life, it's about communicating that their life has worth. This message is so vitally important in a world where life can have the potential to be viewed with such little value."

**Hilary Brown** CEML Hospital, Angola



# 6

## MIGA offers six Grants of \$3,500 each consisting of:

### \$2,000 for Medical Students

to assist in funding their personal elective costs, including travel, accommodation and vaccinations

### \$1,500 for Developing Communities

to assist in the purchase of medical or other aid for the community visited by the student

### Dedicated Grant for Indigenous Students

The number of Indigenous medical student enrolments has been increasing each year, and is now close to aligning with the ratio of Indigenous to non-Indigenous people in Australia.

At MIGA we acknowledge the challenges faced by Indigenous medical students in completing their qualifications and are passionate about achieving equity for this group. As part of an initiative introduced in 2013, each year we set aside one of the six Elective Grants to award specifically to an Indigenous medical student applicant interested in pursuing an elective placement in a developing community.\*

\*Providing suitable Proposals are received which meet MIGA's selection criteria.





## Am I eligible?

The Elective Grants Program is open to current medical students in Australia who:

- Are medical student members of MIGA
- Are enrolled in an accredited course of medical study in Australia for the purpose of obtaining registration as a medical practitioner
- Wish to undertake an elective program in a developing community between 1 March 2017 and 28 February 2018. The elective must be recognised by your university or medical school as a required part of your studies.

**Not insured with MIGA?**  
Thankfully, student membership is free!



To join, simply visit our website and complete the online Application Form for automatic and immediate confirmation.

**Please note** MIGA is unable to accept joint Applications for Grants. Students travelling together are free to submit their own individual Proposals for an Elective Grant, however, there is no guarantee each of the students will receive a Grant.

Full details of the Program's terms and conditions are available from our website.



## How do I apply?

To be considered for an MIGA Elective Grant you will need to:

1

### Prepare your Proposal

This is a key component of your application that allows you to communicate what's different about you and your elective. Before commencing, make sure you review our suggestions on preparing your Proposal.

2

### Complete the Elective Grants Program Online Application Form available on our website

This Form requires your contact and elective details and asks you to nominate your Proposal submission method.

3

### Submit your Proposal by one of two methods

**Electronic Submission**  
The Proposal can be submitted electronically by uploading it, and up to three other supporting documents, using the Online Application Form.

### Hard Copy Submission

To submit your Proposal in hard copy select this option on the Online Application Form and send it by mail to MIGA using the cover sheet available from our website.

Both your Online Application Form and Proposal (regardless of submission method) must be received by MIGA by **5pm (CST) on Friday, 25 August 2017.**

## Preparing my Proposal

The Proposal is a matter for you to consider, as we do not define a required format, word count, or set layout to follow. Instead, we encourage you to be creative and really show us what's different about you, your elective and what you plan to achieve!

**No matter how you choose to prepare your Proposal, to assist our judging panel in their decision making we do encourage you to cover the following points as a minimum:**

- When and where you will be undertaking your elective
- Full details of your interest in medicine in the developing community and/or country where you are proposing to undertake the elective
- How you will help to make a difference
- Your aims in completing the elective, including what you hope to learn and achieve in the community
- Any previous experience in developing communities or countries
- Specific details about how you propose the \$1,500 donation to the hospital or community will be used
- Any additional information you believe will help to support your submission.

The \$1,500 donation should be used for a purpose that supports the needs of the hospital, clinic or health unit where your elective will be undertaken. For example, it could be used for a cache of drugs or medical supplies, surgical equipment, or to support a specific program.



## Key dates to remember

Each year, the Program is open for Applications between May and August, with recipients announced in October.

The specific dates for the 2017 Program are:

### Applications open

Monday, 1 May 2017

### Applications close

Friday, 25 August 2017  
at 5pm (CST)

### Application outcome announced

Mid-October 2017

### Eligible elective dates

1 March 2017 to 28 February 2018  
(or as otherwise agreed in writing with MIGA)

**Please note** If you are undertaking your elective within the eligible dates but before the recipients are announced, you will be awarded the Grant retrospectively if your Application is successful. This applies to students undertaking electives between March and October 2017.



*"Basic equipment such as defibrillators, resuscitation drugs and airway devices were unavailable... It felt so wrong that every gym and shopping centre in Australia has a defibrillator, whilst a hospital providing emergency care to 40,000 people in the Makira-Ulawa Province did not have this simple but potentially life-saving device."*

**Ryan Avery** KiraKira Hospital,  
Solomon Islands



# 2016 MIGA Elective Grant Recipients

## Aileen Foale

University of Western Australia  
Mae Tao Clinic  
Mae Sot, Tak Province, Thailand

\$1,500 community donation use: Donation to assist patients pay for unaffordable investigations and treatment that sadly they would have otherwise missed out on.

## Alexandra Ridley

University of Sydney  
World Medical Fund for Children  
Nkhotakota, Central Region, Malawi

\$1,500 community donation use: Purchase of malaria rapid tests and anti-malarial medication, as well as schistosomiasis medication, anti-worming medication and anti-retroviral therapy.

## Ryan Avery

Bond University  
KiraKira Hospital  
Makira-Ulawa Province, Solomon Islands

\$1,500 community donation use: Funding to assist in the purchase of an automatic defibrillator for the hospital.

## Matthew Pipe

(Indigenous Grant Recipient)

University of Newcastle  
World Mate Emergency Hospital  
Battambang, Cambodia

\$1,500 community donation use: Assist in repairing or replacing the mobile x-ray machine and C-Arm which were both out of order.

## Stuart Brown

University of Adelaide  
Kaski Sewa Hospital and Research Center  
Pokhara, Nepal

\$1,500 community donation use: Provision of much-needed equipment and common medication for the hospital's Rural Village Health Camps.

## Hilary Brown

Monash University  
CEML Hospital  
Lubango, Angola

\$1,500 community donation use: Purchase of paediatric pulse oximeter probes to improve the care of neonatal respiratory distress.

What are you waiting for?

Your medical skills are needed desperately. Submit your application today, because together we can make a difference.







**Be inspired by their life-changing experiences**

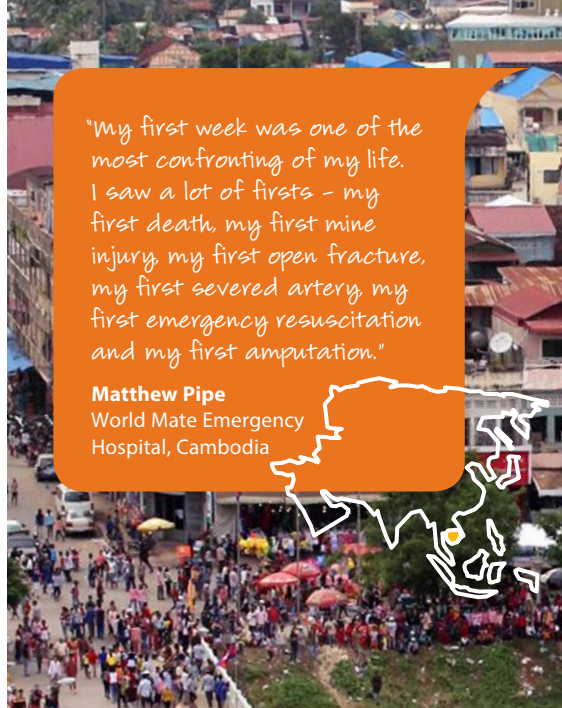
To see the potential of an Elective Grant we encourage you to view the reports of our 2016 recipients available on our website! These students visited regions all over the world and have incredible stories and photographs to share.



*"In just four weeks I was exposed to a wide variety of medical conditions, ranging from common ischaemic heart disease and chronic obstructive airways disease to more exotic infectious diseases; many of which I had only read about, and a few I had barely even heard of (such as leptospirosis and tropical pulmonary eosinophilia due to lymphatic filariasis)."*

**Stuart Brown** Kaski Sewa Hospital and Research Center, Nepal





"My first week was one of the most confronting of my life. I saw a lot of firsts - my first death, my first mine injury, my first open fracture, my first severed artery, my first emergency resuscitation and my first amputation."

**Matthew Pipe**  
World Mate Emergency  
Hospital, Cambodia

## MIGA's free insurance protection for medical students

### Why do students need insurance?

As a medical student you never quite know when you could become involved in a medical emergency. Even if you consider yourself a sensible, conscientious student you are not immune to legal or disciplinary action. It's important to remember you don't need to be at fault – you might unknowingly get on the wrong side of someone or simply be in the wrong place at the wrong time. It can happen easily and quickly escalate out of your control.

Why take unnecessary risks when you can ensure you're covered by MIGA at no cost to you?

### What's in it for me?

MIGA offers free insurance protection for medical students, with automatic cover for:

- Elective and scholarship placements
- Clinical placements
- Emergency medical assistance you provide (also known as Good Samaritan Acts)
- Medical Board and Tribunal matters
- Coronial inquiries and criminal investigations.

There are also many other benefits relevant to your study and future as a doctor:

- Access to the Elective Grants Program
- Free 24/7 medico-legal support and advice
- Free intern insurance
- Regular emails including easy-to-enter online competitions with awesome prizes
- Access to our Bulletins and other educational material.

Insurance policies available through MIGA are issued by Medical Insurance Australia Pty Ltd. MIGA has not taken into account your personal objectives or situation. Before you make any decisions about our policies, please read our Product Disclosure Statement and Policy Wording and consider your personal needs. Call MIGA for a copy or visit our website.



### Join online today

To be protected by our FREE medical student insurance, visit [www.miga.com.au](http://www.miga.com.au) and complete our simple online Application Form.

It only takes a few minutes, with confirmation sent straight to your inbox!



## About MIGA

MIGA is a national provider of medical indemnity insurance and associated services to the medical profession across Australia. We have been supporting and protecting the medical profession for over 115 years.

At MIGA, our philosophy is focussed on being there for our clients.

'Always' expresses our commitment to providing the highest level of personal service and professional support. Whether it is arranging your insurance, dealing with a claim or seeking advice or information, you can always rely on us.

Always the  
first choice for  
your medical  
indemnity  
insurance and  
protection



**General Enquiries  
and Client Service**

Free Call 1800 777 156  
Facsimile 1800 839 284

**Claims and Legal Services**

(During Office hrs and 24hr  
emergency legal support)

Free Call 1800 839 280  
Facsimile 1800 839 281

[miga@miga.com.au](mailto:miga@miga.com.au)  
[www.miga.com.au](http://www.miga.com.au)

**Postal**

GPO Box 2048 Adelaide  
South Australia 5001

**Head Office**

Level 14, 70 Franklin Street  
Adelaide, South Australia 5000